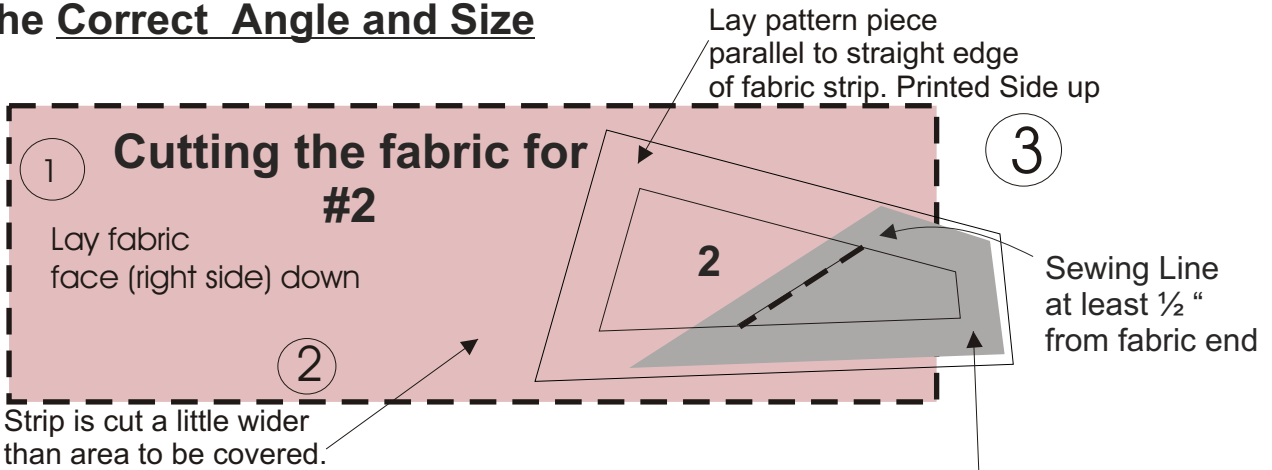


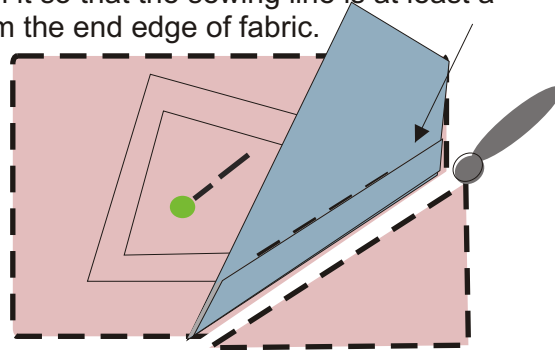
Foundation (paper) Piecing Know-How

Cut the Correct Angle and Size



1. Lay Fabric Face Down
2. Strip to be cut a little wider than area to be covered.
3. Place pattern piece printed side up, with edge of the pattern parallel to the edge of fabric. Position it so that the sewing line is at least a half inch in from the end edge of fabric.

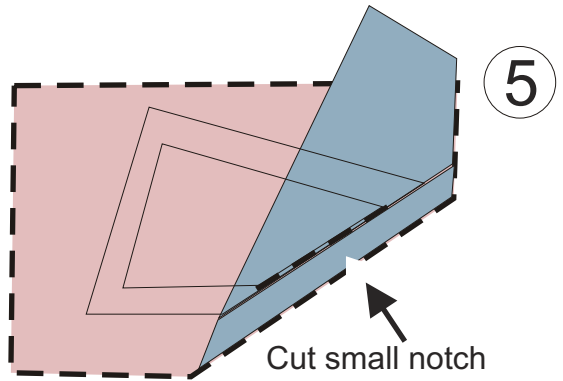
It helps to put a pin in the section you are cutting the fabric for. This way you can only fold it back in the direction you want.



Previous Piece already in place

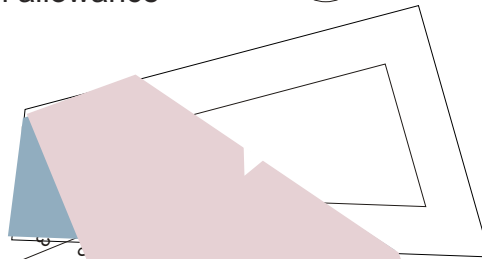
- 4 Fold back along stitching line, pulling previous seam allowance free. And Trim along line formed by seam allowance.

4. Fold back along sewing line. Make sure "trimmed" seam allowance from previously added pieces is pulled free and lays flat against fabric strip.

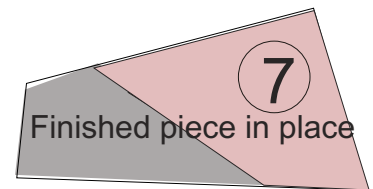


5. Cut a small notch in the seam allowance through the 2 pieces of Fabric.

- 6 Match the Notch Turn over & sew on the line. Open & press.



7. Trim outside edge



Congratulations!
You always have the correct size!
You always have the correct angle!