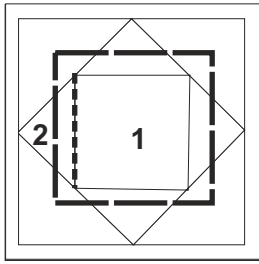


Foundation (paper) Piecing Know-How

How to Foundation (Paper) Piece

How the pattern piece looks from the printed side

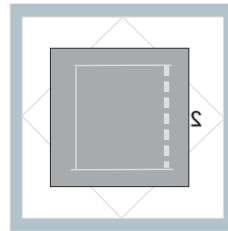


Front

Printed side you will sew on.

You need to cut a piece for #1 1/2" larger to cover all around the space and allow for the needed seam allowance

How the first piece correctly placed looks from the Blank Side.



Back

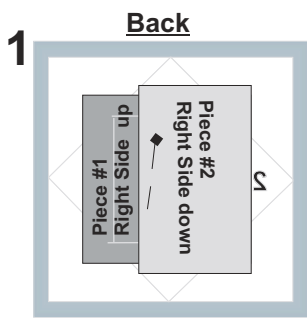
Crease the line between 1 & 2.

Turn the paper over to the blank side. You should be able to see through the paper. Hold it up to a light source helps.

Align the straight edge of your fabric piece 1/4" beyond the creased line and make sure the fabric piece is large enough to go beyond it's space evenly on all sides. **Don't sew yet!**

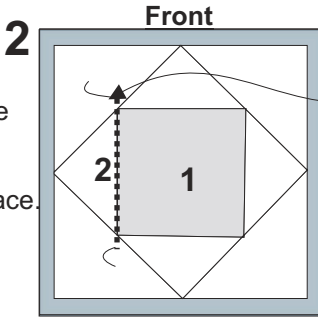
Adding Piece #2

You will be sewing piece #1 and piece #2 at the same time.



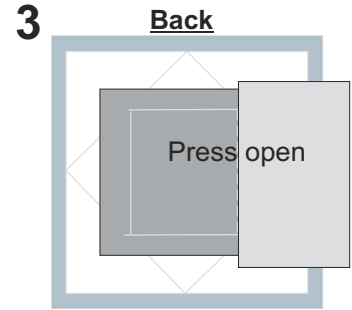
Back

Align piece #2 along straight edge of piece #1 and pin to hold in place.



Front

Begin a few stitches before line and end a couple stitches beyond.



3

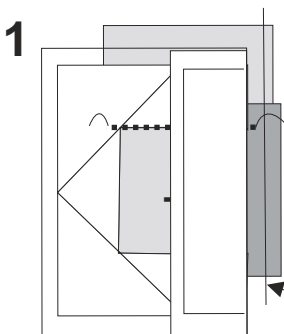
Back

Press open

Use very small stitch 18 to 20 per inch

Fold & Trim - Place Fabric Piece - Sew on Line - Press Open

Steps for Adding All Other Pieces till Filled - Follow the number order

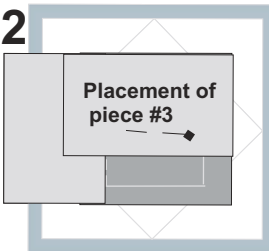


1

Crease the line of the next piece to be added

Fold paper back and Trim excess fabric to 1/4" from stitched line.

Front

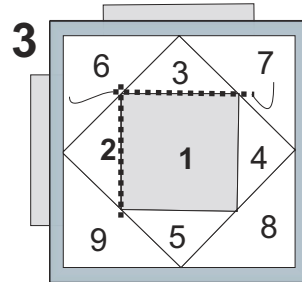


2

Placement of piece #3

Back

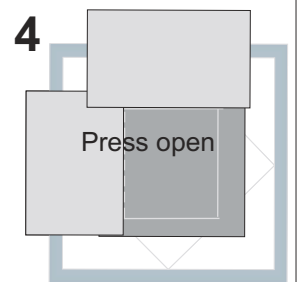
Align next piece to add along newly trimmed seam allowance



3

Front

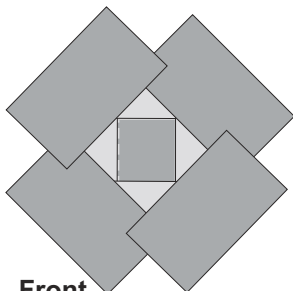
Sew on line



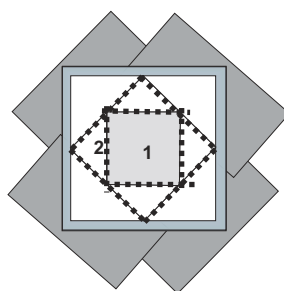
4

Press open

Back Press open



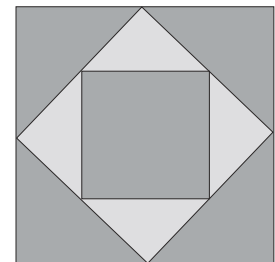
Front



Back

Trim around outside edge. If your pattern does not include the seam allowance make sure you add it.

Finished Block!



Keep following the steps 1-4 as you add each piece in sequence.